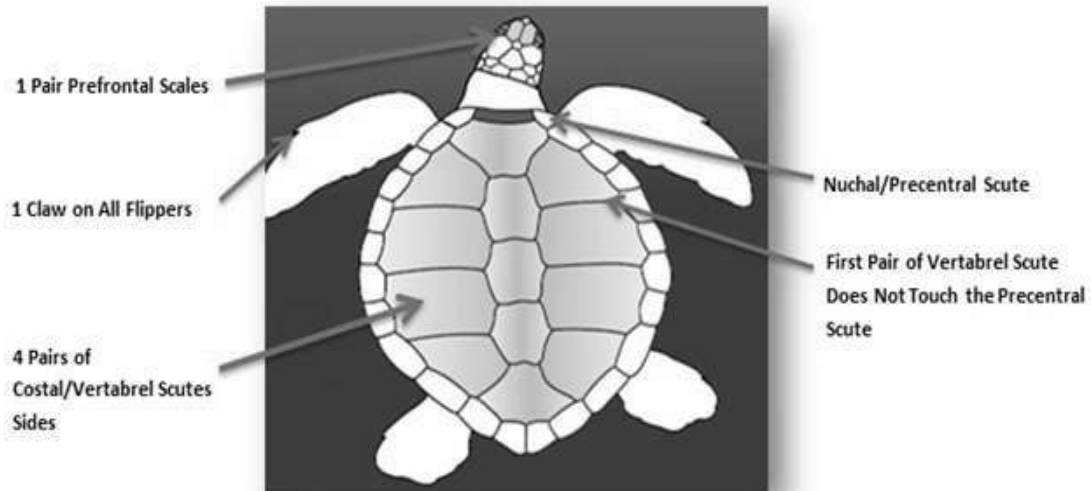




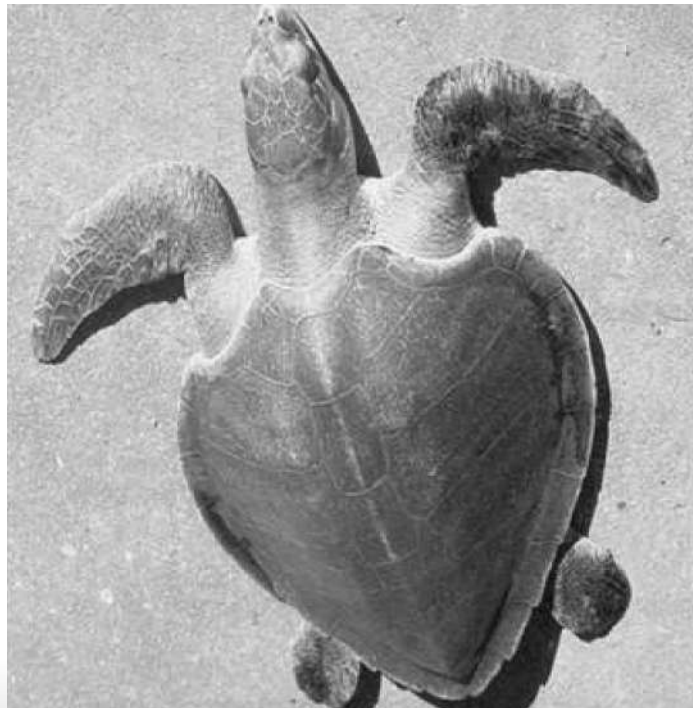
Source: WWF Pacific

# TURTLE SPECIES AND IDENTIFICATION

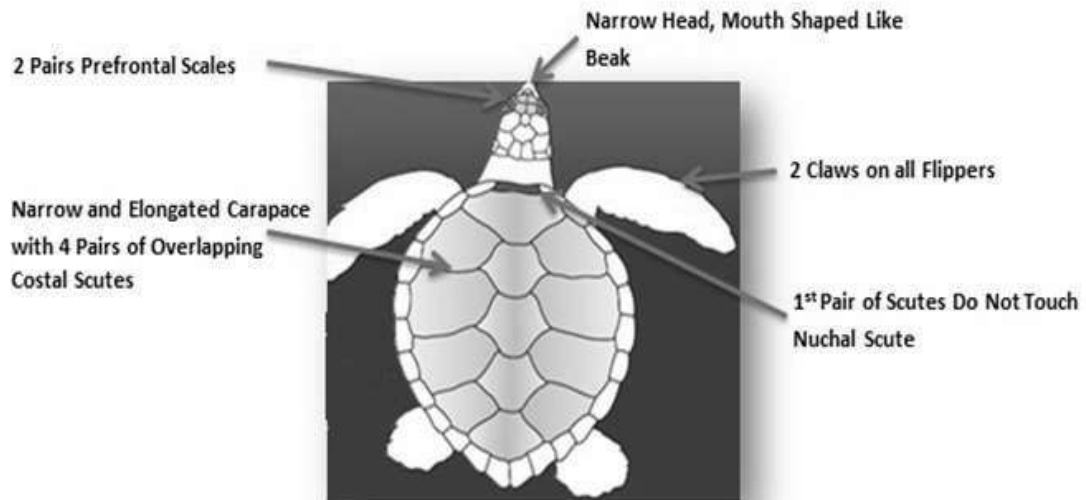
## GREEN TURTLE/ VONU DINA/(CHELONIA MYDAS)



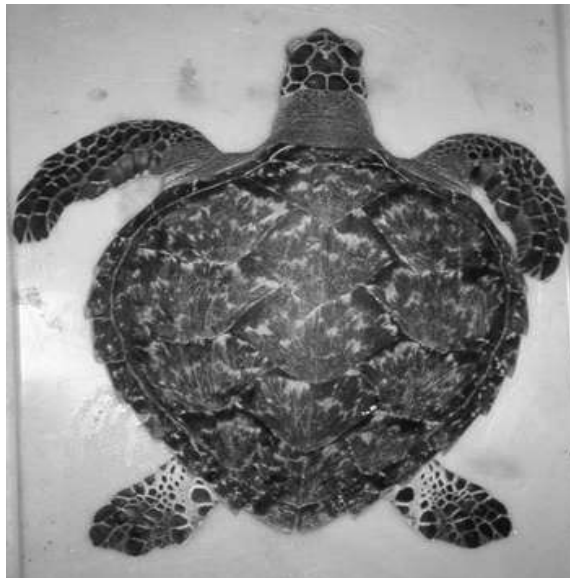
**\*Status on the IUCN Red List: Endangered**



## HAWKSBILL TURTLE/VONU TAKU/(ERETMOCHELYS IMBRICATE)

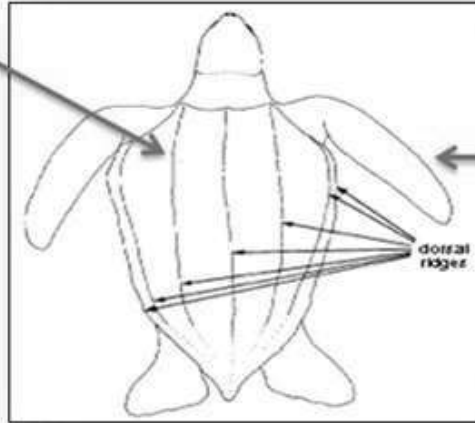


\*Status on the IUCN Red List: Critically Endangered



## LEATHERBACK TURTLE/VONU DAKULACI/(DERMOCHELYS CORIACEA)

No Scutes - Large, Elongated Carapace with 5 Distinct Ridges.

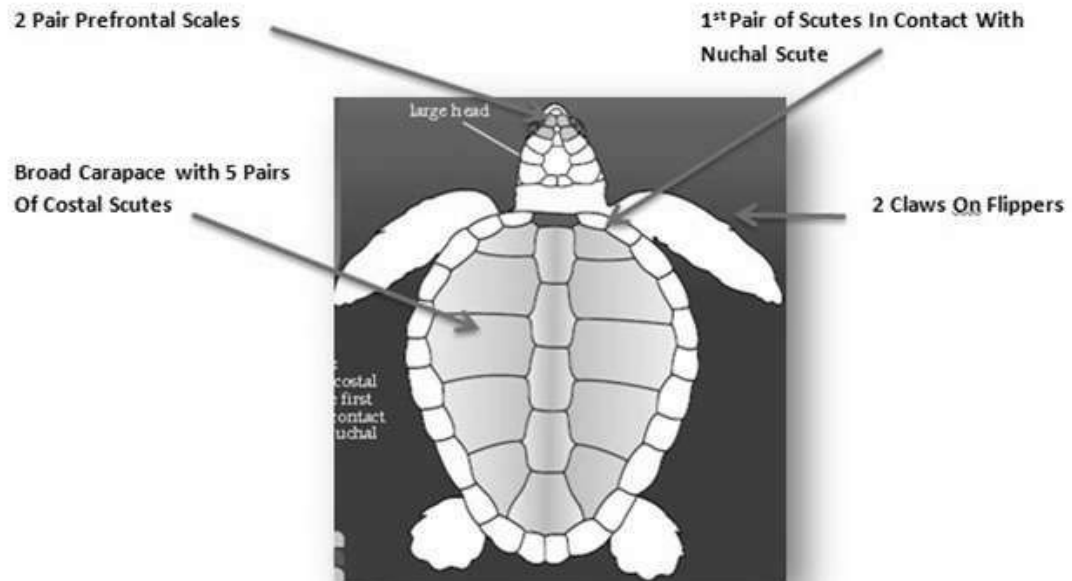


No claws on flippers, front flippers are longer than any other sea turtle

\*Status on the IUCN Red List: Critically Endangered



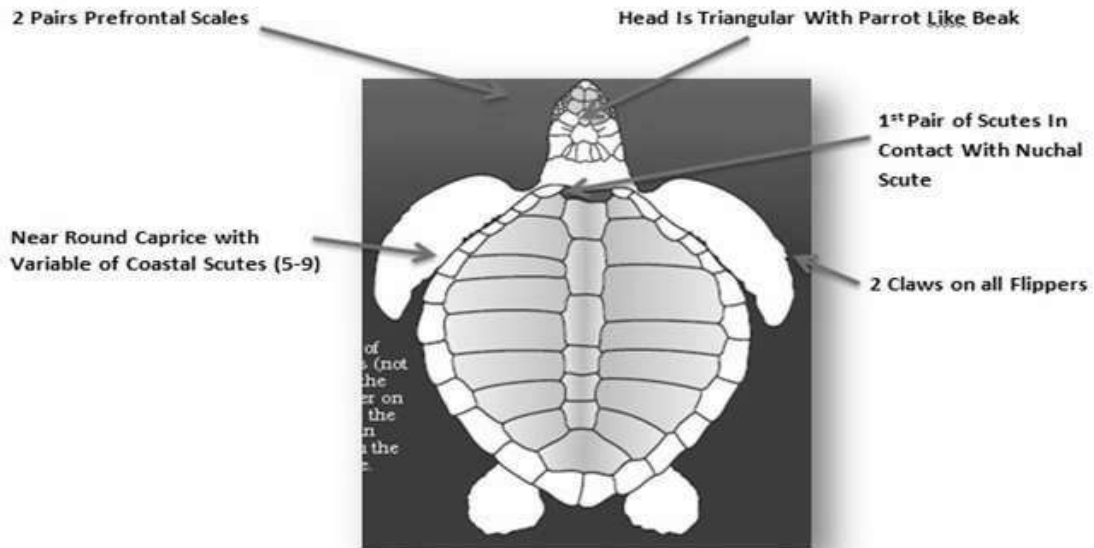
## LOGGERHEAD TURTLE/TUVONU/(CARETTA CARETTA)



**\*Status on the IUCN Red List: Endangered**



## OLIVE RIDLEY TURTLE/SIGAWALE/(LEPIDOCHELYS OLIVACEA)



\*Status on the IUCN Red List: Vulnerable



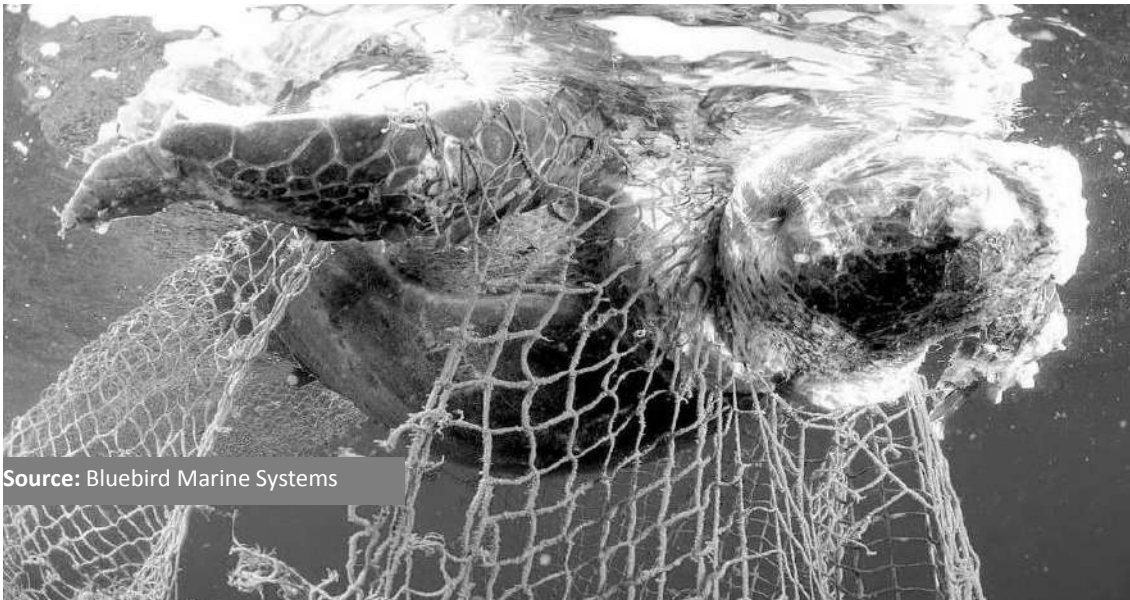
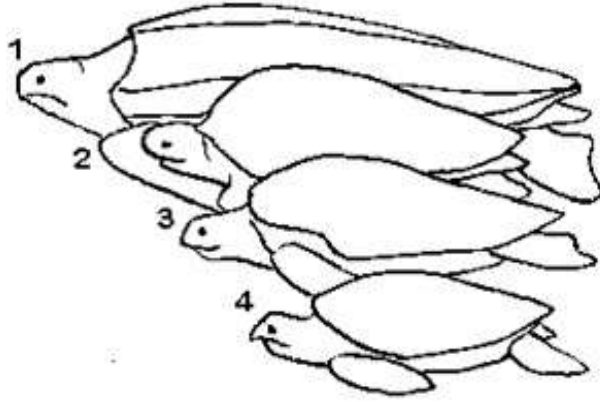
## LENGTH OF TURTLE SPECIES

1. Leatherback turtle: 120 - 210cm

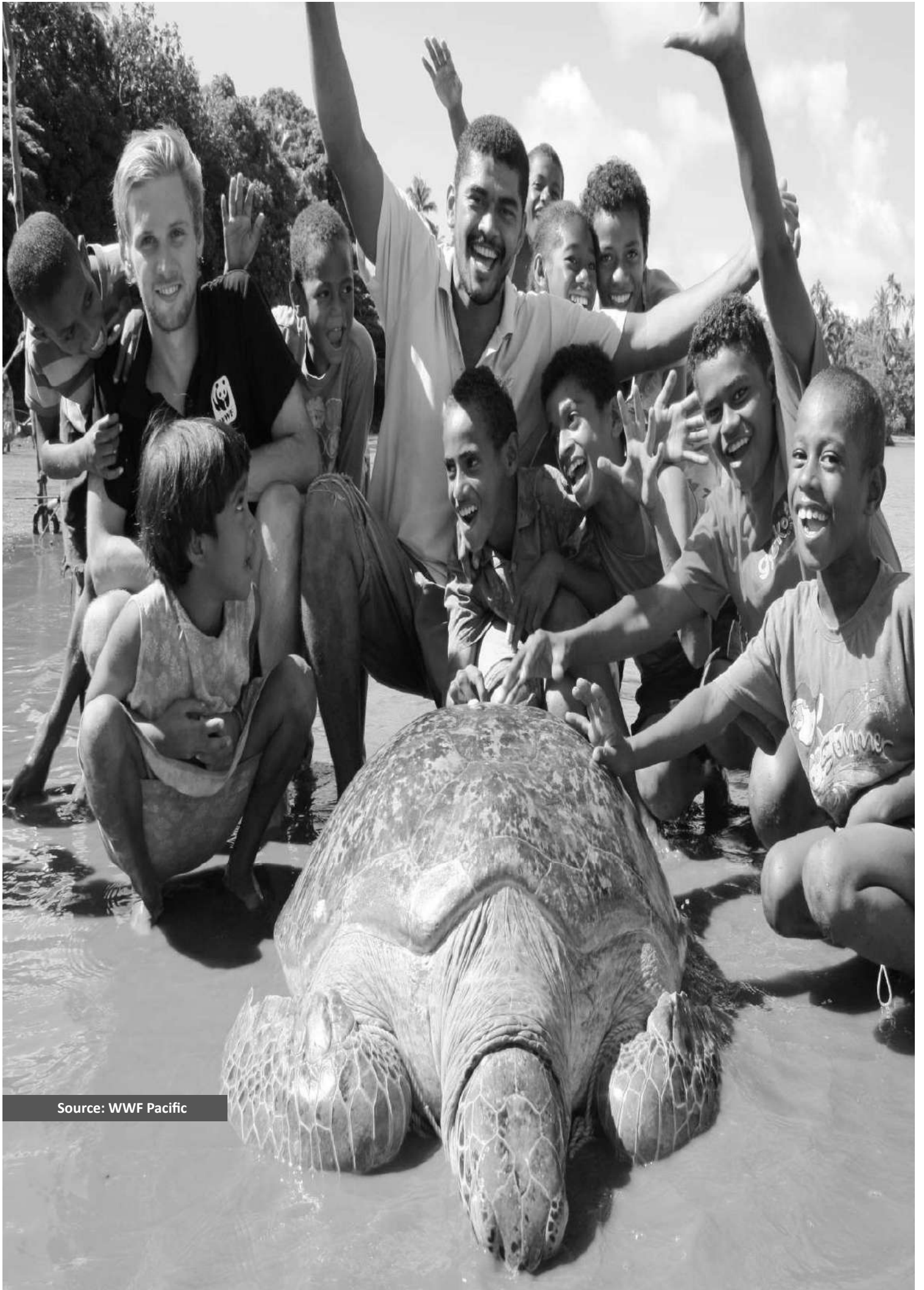
2. Green turtle: 80 - 120cm

3. Loggerhead turtle: 70 - 110cm;  
(FBT)

4. Hawksbill turtle: 55 - 95 cm; (ORT)



Source: Bluebird Marine Systems



Source: WWF Pacific

## BIBLIOGRAPHY

MacKay, M. L. (2009). Does Fiji's Turtle Moratorium Work? Marine Turtle Newsletter, 1.

Minter, A. (2008). Compliance and Enforcement for Coastal Fisheries Management in Fiji.

## LIST OF LAWS

1. Constitution of Fiji 2013.
2. Endangered and Protected Species Act 2002.
3. Endangered and Protected Species Regulations 2003.
4. Fisheries Act [CAP] 158.
5. Fisheries (Protection of Turtles) (Amendment) Regulations 2004.
6. Fisheries (Protection of Turtles) (Amendment) Regulations 2010.
7. Judges Rules 1967.
8. Crimes Decree 2009.
9. Criminal Procedure Decree 2009.

## USEFUL CONTACTS

### **Fiji Environmental Law Association (FELA)**

22 Dhanji Street, Samabula  
Suva  
Phone: 330 0122  
Website: [www.fela.org.fj](http://www.fela.org.fj)

### **Department of Environment (Western Division)**

1<sup>st</sup> Floor, Rogorogivuda Building  
P O Box 701,  
Tavewa Avenue,  
Lautoka  
Phone: 664 5055 | 666 0140 Fax: 666 0141

### **Department of Fisheries (Headquarters)**

Takayawa Building, Toorak  
P O Box 2218,  
Government Buildings,  
Suva  
Phone: 330 1611 Fax: 330 0435

### **Divisional Fisheries Office (Eastern Division)**

Principal Fisheries Officer: 336 1122  
Senior Fisheries Officer: 336 1122  
Website: [www.fisheries.gov.fj](http://www.fisheries.gov.fj)

### **Divisional Fisheries Office (Central)**

P O Box 481,  
Nausori  
Senior Fisheries officer (Central)  
Phone: 347 7617

### **Fisheries Office (Wainibokasi)**

Phone: 347 7033 Fax: 347 7033

### **Fisheries Office (OIC Navua)**

Phone: 346 0288

### **Fisheries Office (Sigatoka)**

Phone: 652 0053

### **Fisheries Office (Tavua)**

Phone: 668 0733

### **Fisheries Office (Rakiraki)**

Vaileka House  
Rakiraki  
Phone: 669 4755

### **Department of Environment (Central Division)**

Magan House  
19 McGregor Road,  
P O Box 2109,  
Government Buildings,  
Suva  
Phone: 331 1699 | 331 1930 | 310 0162 Fax: 331 2879  
Website: [www.environment.gov.fj](http://www.environment.gov.fj)

### **Department of Environment (Northern Division)**

Ground Floor, Ratu Raobe Building,  
Nanuku Street,  
P O Box 485,  
Labasa  
Phone: 881 8015 | 881 8017 Fax: 881 8016

### **Divisional Fisheries Office (Northern Division)**

P O Box 3920,  
Labasa  
Phone: 881 2822 Fax: 881 8051

### **Fisheries Office (Lakeba)**

Phone: 356 2811

### **Divisional Fisheries Office (Western Division)**

P O Box 4450,  
Lautoka  
Phone: 666 5899 Fax: 666 7939

### **Fisheries Office (Levuka)**

Phone: 344 0396

### **Fisheries Office (Nabouwalu)**

Phone: 828 3877

### **Fisheries Office (Savusavu)**

Phone: 885 0967

### **Fisheries Office (OIC Ono i Lau)**

Phone: 603 0439

### **Fisheries Office (Vanuabalavu)**

Phone: 603 0719 | 603 0720

### **Fisheries Office (Kadavu)**

Phone: 363 3034





**Fiji Environmental Law Association**

22 Dhanji Street, Samabula

P O Box 19196,

Suva

Phone: 330 0122

Website: [www.fela.org.fj](http://www.fela.org.fj)

Email: [info@fela.org.fj](mailto:info@fela.org.fj)