

See discussions, stats, and author profiles for this publication at: <https://www.researchgate.net/publication/361135594>

The 2014–17 Global Coral Bleaching Event: The Most Severe and Widespread Coral Reef Destruction

Preprint · April 2022

DOI: 10.21203/rs.3.rs-1555992/v1

CITATIONS

0

READS

130

168 authors, including:



C. Mark Eakin

National Oceanic and Atmospheric Administration

196 PUBLICATIONS 19,776 CITATIONS

SEE PROFILE



Sean Richard Connolly

Smithsonian Tropical Research Institute

172 PUBLICATIONS 17,834 CITATIONS

SEE PROFILE



Erick F Geiger

National Oceanic and Atmospheric Administration

13 PUBLICATIONS 445 CITATIONS

SEE PROFILE



Jacqueline De La Cour

National Oceanic and Atmospheric Administration

24 PUBLICATIONS 525 CITATIONS

SEE PROFILE

Some of the authors of this publication are also working on these related projects:



COVID-19 and global fisheries [View project](#)



Genetic identification of Symbiodinium in scleractinian corals off Farur, Hengam and Larak islands [View project](#)

The 2014-17 Global Coral Bleaching Event: The Most Severe and Widespread Coral Reef Destruction

C. Mark Eakin (✉ corals.and.climate@gmail.com)

National Oceanic and Atmospheric Administration <https://orcid.org/0000-0002-5987-0858>

Denise Devotta

Coral Reef Watch, Center for Satellite Applications and Research, U.S. National Oceanic and Atmospheric Administration

Scott Heron

James Cook University <https://orcid.org/0000-0001-5262-6978>

Sean Connolly

Smithsonian Tropical Research Institute <https://orcid.org/0000-0003-1537-0859>

Gang Liu

Coral Reef Watch, U.S. National Oceanic and Atmospheric Administration

Erick Geiger

Coral Reef Watch, Center for Satellite Applications and Research, U.S. National Oceanic and Atmospheric Administration

Jacqueline De La Cour

Coral Reef Watch, Center for Satellite Applications and Research, U.S. National Oceanic and Atmospheric Administration

Andrea Gomez

Greater Atlantic Regional Office, U.S. National Oceanic and Atmospheric Administration Fisheries

William Skirving

National Oceanic and Atmospheric Administration

Andrew Baird

James Cook University <https://orcid.org/0000-0001-8504-4077>

Neal Cantin

Australian Institute of Marine Science

Courtney Couch

Cooperative Institute for Marine and Atmospheric Research, University of Hawaii at Manoa

Simon Donner

University of British Columbia <https://orcid.org/0000-0003-0600-7388>

James Gilmour

Australian Institute of Marine Science

Manuel Gonzalez-Rivero

Australian Institute of Marine Science

Mishal Gudka

CORDIO East Africa

Hugo Harrison

ARC Centre of Excellence For Coral Reef Studies, James Cook University

Gregor Hodgson

Coral Reef Consultants LLC

Ove Hoegh-Guldberg

The University of Queensland <https://orcid.org/0000-0001-7510-6713>

Andrew Hoey

ARC Centre of Excellence For Coral Reef Studies <https://orcid.org/0000-0002-4261-5594>

Mia Hoogenboom

ARC Centre of Excellence for Coral Reef Studies, James Cook University <https://orcid.org/0000-0003-3709-6344>

Terry Hughes

ARC Centre of Excellence For Coral Reef Studies <https://orcid.org/0000-0002-5257-5063>

Meaghan Johnson

National Parks of Eastern North Carolina

James Kerry

ARC Centre of Excellence for Coral Reef Studies, James Cook University

Jennifer Mihaly

Reef Check Foundation

Aarón Muñiz-Castillo

Laboratorio de Ecología de Ecosistemas de Arrecifes Coralinos, Departamento de Recursos del Mar, Centro de Investigación y de Estudios Avanzados del I.P.N.

David Obura

CORDIO East Africa <https://orcid.org/0000-0003-2256-6649>

Morgan Pratchett

James Cook University <https://orcid.org/0000-0002-1862-8459>

Andrea Rivera-Sosa

Laboratorio de Ecología de Ecosistemas de Arrecifes Coralinos, Departamento de Recursos del Mar, Centro de Investigación y de Estudios Avanzados del I.P.N.

Claire Ross

Department of Biodiversity, Conservation and Attractions

Jennifer Stein

Fish and Wildlife Research Institute

Angus Thompson

Australian Institute of Marine Science

Gergely Torda

James Cook University <https://orcid.org/0000-0002-4585-3045>

T. Shay Viehman

National Centers for Coastal Ocean Science, U.S. National Oceanic and Atmospheric Administration

Cory Walter

International Center for Coral Reef Research and Restoration, Mote Marine Laboratory

Shaun Wilson

Department of Biodiversity, Conservation and Attractions <https://orcid.org/0000-0002-4590-0948>

Benjamin Marsh

ReefSense

Blake Spady

ReefSense

Noel Dyer

Office of Coast Survey, U.S. National Oceanic and Atmospheric Administration

Thomas Adam

University of California, Santa Barbara

Mahsa Alidoostsalimi

School of Geography, Earth and Atmospheric Sciences, Faculty of Science, The University of Melbourne

Parisa Alidoostsalimi

Department of Marine Biology, Science and Research Branch, Azad University

Lorenzo Alvarez-Filip

Universidad Nacional Autónoma de México <https://orcid.org/0000-0002-5726-7238>

Mariana Álvarez-Noriega

ARC Centre of Excellence for Coral Reef Studies, James Cook University <https://orcid.org/0000-0003-1295-6897>

Keisha Bahr

Texas A&M University, Corpus Christi

Peter Barnes

Ningaloo Marine Park, Parks and Wildlife Service – Exmouth District, Department of Biodiversity, Conservation and Attractions

José Barraza Sandoval

Institute of Science, Technology and Innovation, Universidad Francisco Gavidia

Julia Baum

University of Victoria <https://orcid.org/0000-0002-9827-1612>

Andrew Bauman

Halmos College of Natural Sciences and Oceanography, Department of Marine and Environmental Science, Nova Southeastern University

Maria Beger

"School of Biology, Faculty of Biological Sciences, University of Leeds

Kathryn Berry

Fisheries and Oceans Canada

Pia Bessell-Browne

Commonwealth Scientific and Industrial Research Organisation

Lionel Bigot

Entropie (IRD, UR, CNRS, UNC, IFREMER), Labex CORAIL, IRD-University of La Réunion

Victor Bonito

Reef Explorer Fiji

Ole Brodnicke

University of Copenhagen <https://orcid.org/0000-0003-1487-692X>

David Burdick

University of Guam Marine Laboratory

Deron Burkepile

University of California, Santa Barbara

April Burt

The Seychelles Islands Foundation

John Burt

New York University Abu Dhabi <https://orcid.org/0000-0001-6087-6424>

Ian Butler

"CoraLogic Environmental Consulting

Jamie Caldwell

Stanford University <https://orcid.org/0000-0002-6220-918X>

Yannick Chancerelle

Centre de Recherches Insulaires et Observatoire de l'Environnement)/SNO Corail

Chaolun Allen Chen

Academia Sinica

Kah-Leng Cherh

Taiwan Environmental Information Association

Michael Childress

Department of Biological Sciences, Clemson University

Darren Coken

King Abdullah University of Science and Technology

Georgia Coward

American Samoa Coral Reef Advisory Group- Department of Marine and Wildlife Resources

M. James Crabbe

Wolfson College <https://orcid.org/0000-0003-3609-1963>

Thomas Dallison

Coral Cay Conservation

Steve Dalton

Fisheries Research, Department of Primary Industries, PO Box 4291

Thomas DeCarlo

Hawaii Pacific University <https://orcid.org/0000-0003-3269-1320>

Crawford Drury

Hawaii Institute of Marine Biology, University of Hawaii

Ian Drysdale

Healthy Reefs for Healthy People Initiative

Clinton Edwards

Center for Marine Biodiversity and Conservation, Scripps Institution of Oceanography, University of California San Diego

Linda Eggertsen

Universidade Federal do Sul da Bahia

Eylem Elma

School of Natural and Environmental Sciences, Newcastle University <https://orcid.org/0000-0001-8305-1169>

Rosmin Ennis

Center for Marine and Environmental Studies, University of the Virgin Islands

Richard Evans

Department of Biodiversity, Conservation and Attractions <https://orcid.org/0000-0003-4364-4810>

Gal Eyal

The University of Queensland <https://orcid.org/0000-0002-3028-8653>

Douglas Fenner

NOAA NMFS Protected Species

Baruch Figueroa-Zavala

Centro Ecológico Akumal

Jay Fisch

Rosenstiel School of Marine and Atmospheric Sciences, University of Miami

Michael Fox

Red Sea Research Center, Division of Biological and Environmental Science and Engineering, King Abdullah University of Science and Technology

Elena Gadoutsis

Save Our Seas Foundation - D'Arros Research Centre

Antoine Gilbert

Ginger-Soproner

Andrew Halford

Pacific Community (SPC)

Tom Heintz

Ginger-Soproner

James Hewlett

Finger Lakes Community College

Jean-Paul A. Hobbs

Western Australian Museum

Whitney Hoot

Bureau of Statistics and Plans

Peter Houk

University of Guam Marine Laboratory

Lyza Johnston

Johnston Applied Marine Sciences

Michelle Johnston

NOAA Flower Garden Banks National Marine Sanctuary

Hajime Kayanne

the University of Tokyo <https://orcid.org/0000-0002-6382-095X>

Emma Kennedy

Australian Institute of Marine Science <https://orcid.org/0000-0003-1821-9740>

Ruy Kikuchi

Federal University of Bahia, RECOR - Coral Reefs and Global Change Lab, National Institute of Science and Technology for the Tropical Marine Environments (INCT AmbTropic <https://orcid.org/0000-0002-6271-7491>

Ulrike Kloiber

Chumbe Island Coral Park

Haruko Koike

Fishery Solutions LLC

Lindsey Kramer

State of Hawai'i Division of Aquatic Resources

Chao-Yang Kuo

Academia Sinica <https://orcid.org/0000-0002-5261-5045>

Judy Lang

Atlantic and Gulf Rapid Reef Assessment (AGRRA)

Abigail Leadbeater

Blue Ventures

Zelinda Leão

Department of Oceanography - Federal University of Bahia, RECOR - Coral Reefs and Global Change Lab, National Institute of Science and Technology for the Tropical Marine Environments (INCT AmbTropic

Jen Lee

Faculty of Science and Marine Environment, Universiti Malaysia Terengganu

Cynthia Lewis

Department of Biology, Florida International University

Diego Lirman

Rosenstiel School of Marine and Atmospheric Science, University of Miami

Guilherme Longo

Marine Ecology Laboratory, Department of Oceanography and Limnology Universidade Federal do Rio Grande do Norte

Chancey MacDonald

CalAcademy

Sangeeta Mangubhai

Talanoa Consulting

Isabel da Silva

Lúrio University

Christophe Mason-Parker

Marine Conservation Society Seychelles

Vanessa McDonough

Biscayne National Park

Melanie McField

Smithsonian Institution

Thayná Mello

Marine Ecology Laboratory, Dept of Oceanography and Limnology, Univ. Federal do Rio Grande do Norte

Celine Miterique - Agathe

Reef Conservation

Stephan Moldzio

Green Corals

Alison Monroe

Marine Genomics Laboratory, Department of Life Sciences, Texas A&M University Corpus Christi

Monica Montefalcone

DiSTAV, University of Genova

Kevin Moses

Zoological Survey of India, Marine Biology Regional Center

Pargol Ghavam Mostafavi

Islamic Azad University

Rodrigo Moura

Instituto de Biologia and SAGE/COPPE, Universidade Federal do Rio de Janeiro

Chathurika Munasinghe

Department of Zoology, Faculty of Science, University of Peradeniya

Takashi Nakamura

Faculty of Science, University of the Ryukyus

Jean-Benoit Nicet

MAREX

Marissa Nuttall

NOAA, Texas Flower Garden Banks National Marine Sanctuary / CPC Inc.

Marilia Oliveira

Department of Oceanography - Federal University of Bahia, RECOR - Coral Reefs and Global Change Lab, National Institute of Science and Technology for the Tropical Marine Environments (INCT AmbTropic)

Hazel Oxenford

CERMES, University of the West Indies

John Pandolfi

The University of Queensland <https://orcid.org/0000-0003-3047-6694>

Vardhan Patankar

Wildlife Conservation Society-India

Denise Perez

Division of Coastal Resources Management, Bureau of Environmental and Coastal Quality
<https://orcid.org/0000-0002-9375-5394>

Nishan Perera

Blue Resources Trust

Derta Prabuning

Reef Check Indonesia Foundation

William Precht

Coastal and Marine Programs, Dial Cordy and Associates, Inc.

K. Diraviya Raj

Suganthi Devadason Marine Research Institute

James Reimer

University of Ryukyus <https://orcid.org/0000-0003-0453-8804>

Laura Richardson

School of Ocean Sciences, Bangor University

Randi Rotjan

Boston University

Nicole Ryan

Australian Institute of Marine Science, Indian Ocean Marine Research Centre

Rod Salm

The Nature Conservancy Micronesia Marine Program

Stuart Sandin

Scripps Institution of Oceanography, University of California San Diego <https://orcid.org/0000-0003-1714-4492>

Stephanie Schopmeyer

Fish and Wildlife Research Institute

Mohammad Shokri

Faculty of Life Sciences and Biotechnology, Shahid Beheshti University

Jennifer Smith

Scripps Institution of Oceanography University of California San Diego

Kylie Smith

Department of Biological Sciences, Clemson University

S. R. Smith

Bermuda Aquarium, Museum and Zoo

Tyler Smith

University of the Virgin Islands <https://orcid.org/0000-0002-5256-6087>

Brigitte Sommer

School of Life Sciences, Faculty of Science, University of Technology Sydney <https://orcid.org/0000-0003-0617-7790>

Melina Soto

Healthy Reefs for Healthy People Initiative

Helen Sykes

Marine Ecology Consulting

Kelley Tagarino

University of Hawaii Sea Grant College Program

Marianne Teoh

Fauna & Flora International

Minh Thai

Institute of Oceanography, Vietnam Academy of Science and Technology <https://orcid.org/0000-0001-6143-1021>

Tai Toh

Tropical Marine Science Institute, National University of Singapore

Alex Tredinnick

MISE Lab, The University of Queensland

Alex Tso

University of British Columbia

Harriet Tyley

Coral Cay Conservation

Ali Ussi

State University of Zanzibar

Christian Vaterlaus

marinecultures.org

Mark Vermeij

Carmabi Foundation/ University of Amsterdam

Si Tuan Vo

Nha Trang Institute of Oceanography, Vietnam Academy of Sciences

Christian Voolstra

University of Konstanz <https://orcid.org/0000-0003-4555-3795>

Hin Boo Wee

Universiti Kebangsaan Malaysia

Bradley Weiler

Rosenstiel School of Marine and Atmospheric Science, University of Miami

Saleh Yahya

Institute of Marine Sciences, University of Dar es Salaam

Thamasak Yeemin

Marine Biodiversity Research Group, Department of Biology, Faculty of Science, Ramkhamhaeng University

Maren Ziegler

Justus Liebig University Giessen

Tadashi Kimura

Palau International Coral Reef Center

Derek Manzello

Atlantic Oceanographic and Meteorological Laboratory, NOAA <https://orcid.org/0000-0002-0720-3041>

Biological Sciences - Article

Keywords:

Posted Date: June 6th, 2022

DOI: <https://doi.org/10.21203/rs.3.rs-1555992/v1>

License:  This work is licensed under a Creative Commons Attribution 4.0 International License.

[Read Full License](#)

Abstract

Ocean warming is increasing the incidence, scale, and severity of global-scale coral bleaching and mortality, culminating in the third global coral bleaching event that occurred during record marine heatwaves of 2014-2017. While local effects of these events have been widely reported, the global implications remain unknown. Analysis of 15,066 reef surveys during 2014-2017 revealed that 80% of surveyed reefs experienced significant coral bleaching and 35% experienced significant coral mortality. The global extent of significant coral bleaching and mortality was assessed by extrapolating results from reef surveys using comprehensive remote-sensing data of regional heat stress. This model predicted that 51% of the world's coral reefs suffered significant bleaching and 15% significant mortality, surpassing damage from any prior global bleaching event. These observations demonstrate that global warming's widespread damage to coral reefs is accelerating and underscores the threat anthropogenic climate change poses for the irreversible transformation of these essential ecosystems.

Full Text

The dramatic increase in marine heatwaves has exposed coral reef ecosystems to more frequent, more intense, and longer-lasting heat stress [1-4]. These are predicted to accelerate in the future [5-7], making anthropogenic climate change the foremost threat to coral reefs globally [1, 2, 5, 8-10]. Strong marine heatwaves cause mass-bleaching of corals, which occurs when the relationship between corals and their photosynthetic symbionts breaks down [11]. Bleached corals are physiologically damaged, nutritionally compromised, and can die if the bleaching is severe or prolonged. During what were then the four warmest years on record, [12-14], reefs around the world experienced the third global-scale coral bleaching event (GCBE3) [15, 16] that lasted from June 2014 to May 2017 (hereafter referred to as 2014-17). This was the most severe global heat stress event recorded on coral reef ecosystems [1, 3, 15], even stronger than the two prior global bleaching events recorded in 1998 [17] and 2010 [2, 18]. Moreover, this was the first time that a global bleaching event lasted longer than a single year [1, 3, 15] – this one spanning three years with bleaching at some locations continuing after the global event concluded [19-21]. Numerous studies have revealed how GCBE3 has impacted coral reefs locally at sites around the globe, including several showing the most severe impacts on record in many locations (see [22] and references therein). This paper provides the first global-scale analysis of the heat stress affecting coral reefs during 2014-17 and the resultant bleaching and mortality observed. We derive statistical relationships between global-scale, remotely-sensed heat stress and onsite surveys of coral bleaching and mortality and use these to estimate the impact of GCBE3, accounting for regional and inter-annual differences in bleaching and mortality responses.

Three Years of Heat Stress on Reefs

Satellite remote sensing was used to identify cumulative heat stress on coral reefs, using the Degree Heating Week (DHW) product from the National Oceanic and Atmospheric Administration's Coral Reef Watch (CRW). During 2014-17, 65.9% of ~5x5 km satellite remote-sensing pixels containing coral reefs

experienced heat stress classified as sufficient to cause significant coral bleaching (Alert Level 1, $DHW \geq 4$ °C-weeks) (Fig. 1, Extended Data Fig. 1a, Extended Data Table 1 [23, 24]). A further 23.7% of reef-containing pixels were subjected to heat stress classified as sufficient to cause severe bleaching and significant mortality (Alert Level 2, $DHW \geq 8$ °C-weeks). 47.3% of reef-containing pixels that reached $DHW \geq 4$ °C-weeks and 20.9% of reef-containing pixels that reached $DHW \geq 8$ °C-weeks did so at least twice during 2014-17 (Extended Data Table 1). Almost 1% of reef-containing pixels reached record levels of heat stress at 16-30 °C-weeks – designated here as a new heat stress threshold, where coral bleaching is likely to cause severe, widespread mortality (Alert Level 3, $DHW \geq 16$ °C-weeks; Extended Data Table 1). Repeated heat stress exposure was widespread during GCBE3. 15.2% of those reaching Alert Level 3 did so in at least two years.

Bleaching and Mortality

In response to the widespread and severe heat stress, we assembled coral bleaching and mortality data from 15,066 in-water and aerial surveys from teams around the globe – totaling more observations than those found in the entire existing global bleaching database from the 1960s through 2010 [25, 26] (Extended Data Table 2, Extended Data Fig. 1b). During GCBE3, 80% of surveys reported a significant level of bleaching (affecting >10% of corals) while 31% reported severe (>50%) bleaching. Additionally, 35% reported significant (>10%) recent coral mortality, 6% of which was severe (>50%). Only 15% of surveys reported no significant bleaching or mortality.

Our global analyses showed a strong positive relationship of both bleaching and mortality with satellite-derived heat stress (DHW), with the rate of biological response to heat stress varying among ocean basins and bleaching years (June to May periods). Comparing observations of significant reef-level bleaching (Fig. 2, Extended Data Fig. 5) across all basins, bleaching sensitivity to heat stress was generally highest in 2015-16 and lowest in 2016-17 (Fig. 2a), reflecting either acclimatization or adaptation of surviving corals, or loss of heat-sensitive phenotypes [27]. Across years, bleaching sensitivity was highest in the Caribbean-Atlantic basin and lowest in the Asia-Pacific (Fig. 2b). Analysis of the full best-fitting model of significant bleaching to heat stress (Extended Data Fig. 5) showed interactions between years and regions, with the Caribbean mainly showing greater sensitivity than the Asia-Pacific in 2014-15 and 2015-16 than in 2016-17. However, the highest sensitivity was seen in the Indian Ocean/Middle East in 2016-17 (Extended Data Fig. 5). Corals in all years and basins generally bleached strongly in response to heat stress at levels above the 4 °C-week threshold normally used to classify significant bleaching [24]. Patterns of severe bleaching (Extended Data Fig. 6) were similar to those seen in significant bleaching, including greater sensitivity in 2015-2016 than 2016-2017 in the Asia-Pacific (Extended Data Fig. 6a), and reduced sensitivity in 2016-2017 in the Caribbean-Atlantic. Notably, 2014-2015 showed more severe bleaching at similar levels of heat stress than 2015-2016 in the Caribbean-Atlantic (Extended Data Fig. 6b). However, curves modeled for severe bleaching (Extended Data Fig. 6) had greater uncertainty than those for significant bleaching (Extended Data Fig. 5), likely due to the much smaller number of observations and uneven spatial distribution of severe bleaching. Fortunately, reports of severe were sporadic and scattered across the basins.

Higher heat stress levels were required to cause coral mortality than bleaching (at both significant and severe levels). Records of significant (>10%) coral mortality again varied among regions and years, with risk of significant mortality risk clearly increasing with heat stress level in the two Indo-Pacific regions (Fig. 3, Extended Data Fig. 7). Because there were less than half the number of mortality reports as bleaching reports, mortality response curves (Fig. 3, Extended Data Fig. 7) were less well constrained than those for bleaching (Fig. 2, Extended Data Fig. 5). Nevertheless, the strong temperature-dependence of mortality in the two Indo-Pacific regions supports the use of 8°C-weeks as a predictor of significant mortality. In contrast, the lack of a statistically discernable positive relationship between mortality and heat stress in the Caribbean in any year suggests that heat stress was probably not a primary driver of mortality in the Caribbean during 2014-17 (discussed below).

In 2016, over 15% of global reef area, including large areas of the tropical Pacific, the Indo-Pacific, and some of the Northwestern Hawaiian Islands, reached or exceeded heat stress of 16 °C-weeks, prompting the addition of a new Alert Level to the Coral Reef Watch products (Fig. 1). Surveys conducted in these areas showed most reefs suffered rapid and severe mortality of many coral species [28-32]. This level of heat stress corresponded with very high probabilities of significant bleaching (Fig. 2, Extended Data Fig. 5), and greater than 50% probabilities of severe bleaching (Extended Data Fig. 6), and significant mortality (Fig. 3, Extended Data Fig. 7). Establishment of a new Alert Level 3 at $DHW \geq 16$ °C-weeks will help capture the increasingly long marine heatwaves [3, 4] that became especially apparent during GCBE3 and are predicted to become more frequent in the future [7]. In contrast to the recent past, marine heatwaves in the tropics now span multiple seasons and in 2014-17 persisted more than a year on some equatorial reefs (e.g., record heat stress in 2014/17 at Jarvis Island in the central Pacific Ocean resulted from over 12 months of heat stress accumulation, with $DHW \geq 4$ °C-weeks lasting from March 2015 to May 2016 [29]).

Assessing the Global Footprint of the 2014-17 Bleaching

Using statistically modeled bleaching and mortality thresholds for each basin and year from the maximum satellite-measured heat stress at each reef-containing pixel, we estimate that 51% of global coral reef locations suffered significant bleaching with 15% suffering significant (>10%) mortality. This mortality likely represents much of the loss of the world's corals during 2009-2018 that was reported in the most recent global coral status report [33]. While GCBE3 progressed globally for three full years (June 2014-May 2017), bleaching and mortality varied in both time and space in relation to heat stress across the 21 GCBE3 regions in each year (Fig. 4).

In general, higher heat stress resulted in higher bleaching and mortality throughout the event and most GCBE3 regions followed this pattern (Figs. 2-3). However, more complex patterns in the ratio between bleaching and mortality emerge in some areas. Factors known to modulate bleaching sensitivity to DHW include cloud cover [34], nutrients [35], species assemblages, and selective mortality of more sensitive species or genotypes. Selective mortality has been seen in the Great Barrier Reef [36, 37] and elsewhere [38, 39], including during heat stress-associated disease outbreaks [40, 41].

Heat stress-driven mortality in most regions was modeled to occur in 30-50% of pixels where bleaching occurred. However, corals in much of the Caribbean-Atlantic bleached at similar heat-stress levels as other basins (Fig. 2, Extended Data Fig. 5) but showed remarkably low new mortality, with fewer than 15% of modeled 'bleaching' pixels experiencing significant mortality. This may have resulted from a long history and higher frequency of heat stress events in the Caribbean-Atlantic [1, 3]. Caribbean coral losses have been quite high in recent decades [33, 42], including bleaching-related mortality during both prior global bleaching events [18, 43], the 1982-83 bleaching event [44], the 2005 Caribbean bleaching event [8], and now disease-related mortality due to Stony-Coral Tissue Loss Disease [45]. These have combined to reduce coral density and diversity. Depauperate in species diversity for millennia, the decline in sensitive coral species since the 1980s has left many Caribbean reefs with especially stress tolerant species and genotypes that survive bleaching [46] but provide diminished ecosystem function [47, 48]. The exception within that basin were the unique coral assemblages found off the coast of Brazil [49]. These the turbid-zone corals experienced both low bleaching and low mortality during GCBE3. Unfortunately, these corals have suffered major losses due to heat stress subsequent to 2017 [50].

Coral bleaching and mortality during the GCBE3 were much greater than those reported in either the 1998 or 2010 global bleaching events [9, 25, 26, 33]. Using DHW calculated from a dataset covering 1982 to present, heat stress during the 2014-17 event (or even in 2016 alone) was more intense and widespread than prior mass bleaching events (Fig. 5).

Of course, bleaching has continued since GCBE. Some reefs damaged during May 2016 – June 2017 continued to see bleaching later in 2017 [19, 20], while others saw severe bleaching in subsequent years [21, 50, 52].

The 2014-17 GCBE3 was more widespread and damaging than any prior bleaching event on record, highlighting the increasing threat of climate change to coral reefs and further indicating that global warming is outpacing the capacity of corals to physiologically resist heat stress on most reefs [9, 52, 53] and may result in collapse or severe bottlenecks in coral populations. The occurrence and intensity of marine heatwaves on coral reefs [1, 25] and elsewhere [4], is accelerating because of anthropogenic release of heat-trapping gases and the resultant greenhouse effect, and is predicted to further intensify [6, 54]. As coral reefs are ecosystem builders that protect shorelines from wave-driven flooding and erosion, and provide food, medicines, cultural identity, and livelihoods for over a billion people [55], these essential ecosystems urgently need protection. Our study found severe coral reef losses due to global warming throughout this protracted three-year bleaching event; an acceleration of the threat that has already placed them as one of the world's most climate-threatened ecosystems [56]. Immediate global action to reduce, and ultimately reverse, escalating emissions of greenhouse gases is essential to halt the accelerating coral loss and associated reef degradation around the world.

Declarations

Acknowledgements The U.S. National Oceanic and Atmospheric Administration's (NOAA) Coral Reef Watch program and National Coral Reef Monitoring Program were supported by funding from the NOAA Coral Reef Conservation Program and Ocean Remote Sensing Program. University of Maryland and ReefSense personnel were fully supported by NOAA grant NA19NES4320002 (Cooperative Institute for Satellite Earth System Studies) at the University of Maryland/Earth System Science Interdisciplinary Center, and by the Professional, Scientific, and Technical Services Program (ProTech)-Satellite contract with Global Science & Technology, Inc. Funding for data collation and analysis provided by Vulcan Inc. The scientific results and conclusions, as well as any views or opinions expressed herein, are those of the author(s) and do not necessarily reflect the views of NOAA or the Department of Commerce. Figure 4 inspired by a National Geographic infographic [57]. We thank J. Moneghetti for assistance with statistical programming.

Author contributions The study was conceptualized by CME who also wrote the first draft of the paper. All authors contributed to writing subsequent drafts. DAD coordinated data compilation in conjunction with JLD and AMG. SRC designed and led the statistical analysis. GL, WJS, EFG, and SFH provided data on heat stress. Large scale coral bleaching and mortality datasets were provided by AHB, NC, CSC, SDD, JG, MGR, MG, HBH, GH, OHG, ASH, MOH, TPH, MEJ, JTK, TK, JM, AIM-C, DOO, MSP, AR-S, CLR, AS, JS, AT, GT, TSV, CSW, and SW. In particular, Great Barrier Reef aerial bleaching surveys were undertaken by TPH and JTK. Thank you to the hundreds of individual data collectors from organizations such as Reef Check, CORDIO, ILTER/PELD (Brazil), and NOAA around the world who contributed to this dataset. In particular, we thank the former Director of Reef Check Foundation, GH, Program Manager, JM as well as the hundreds of volunteers and the following team leaders from almost 30 Reef Check chapters, who organized teams, carried out surveys and provided significant datasets for these analyses: Australia: Jennifer Loder, Jodi Salmod, Bahamas: Lourene Jones, Monique Curtis, Tom McFeely, Brunei: Sheikh Al-Ildrus Nikman, Colombia: Phanor Montoya, Egypt: Nina Milton, Mohammad Kotb, Moshira Hassan, Fiji: HS, Florida: Nikole Ordway, France (Pacific): Jean Pascale Quod, Matthieu Petit, Denis Schneider, Harold Cambert, France (Atlantic): Remi Garnier, Mathilde Facon, Grenada: Katlyn Treiber-Vajda, Haiti: Erika Pierre Louis, Indonesia: DP, Delphine Robbe, Gianfranco Rossi, Meike Huhn, Andrew Taylor, Nyoman Sugiarto, Iran: Mohammad Ghavasi, Japan: Yasuaki Miamoto, J Harukawa, Megumu Tsuchikawa, Maldives: Jean-Luc Solandt, Matthias Hammer, Catherine Edsell (Biosphere Expeditions), Malaysia: Julian Hyde, Sue Yee Chen, Alvin Chelliah, Netherlands Antilles: Marjo van den Brulck, Oman: Jean-Luc Solandt, Matthias Hammer, Catherine Edsell (Biosphere Expeditions), Philippines: Vanessa Vergara, Carina Escudero, Xavier Verdadero, Analies Andringa, Scott Countryman, Colin Lock, Puerto Rico: Joel Melendez, Carolina Aragones, St Kitts/Nevis: James Hewlett, Sao Tome/Principe: An Bollen, Thailand: Nathan Cook, Suchana Chavanich, Timor-Leste: Jenny House, Tobago: Lanya Fanovich, Taiwan: CAC, Kah-Leng Cherh, Vietnam: VST; and Healthy Reefs for Healthy People Initiative country coordinators who organized teams, carried out surveys and provided significant datasets for these analyses: Belize: Nicole Craig, Guatemala: Ana Giró Petersen, Honduras: ID, Mexico: MS. We are very grateful for the work of myriad other scientists and non-scientists who contributed data used herein.

Author information Reprints and permissions information is available at www.nature.com/reprints. The authors declare no competing financial interests. Readers are welcome to comment on the online version of the paper. Correspondence and requests for materials should be addressed to CME (corals.and.climate@gmail.com)

Data Availability Sea surface temperature data and heat stress metrics are available from https://coralreefwatch.noaa.gov/product/5km_v3.1 and archived at the National Centers for Environmental Observations at <https://doi.org/10.25921/6jgr-pt28>. Coral bleaching and mortality data are found in Extended Data Table 2 and will be part of a subsequent release of the high-resolution global mass coral bleaching database [26]. All other data generated or analyzed during this study are included in this published article and its supplementary information files.

References

1. Eakin, C.M., et al., *Climate variability and change: monitoring data and evidence for increased coral bleaching stress*, in *Coral bleaching: patterns, processes, causes and consequences*, M.J.H. van Oppen and J.M. Lough, Editors. 2018, Springer International Publishing: Cham. p. 51-84.
2. Heron, S.F., et al., *Warming trends and bleaching stress of the world's coral reefs 1985–2012*. *Scientific Reports*, 2016. **6**: p. 38402.
3. Skirving, W.J., et al., *The relentless march of mass coral bleaching: a global perspective of changing heat stress*. *Coral Reefs*, 2019. **38**(4): p. 547-557.
4. Oliver, E.C.J., et al., *Longer and more frequent marine heatwaves over the past century*. *Nature Communications*, 2018. **9**(1): p. 1324.
5. Hoegh-Guldberg, O., et al., *Coral Reef Ecosystems under Climate Change and Ocean Acidification*. *Frontiers in Marine Science*, 2017. **4**(158).
6. Donner, S.D., S.F. Heron, and W.J. Skirving, *Future scenarios: a review of modelling efforts to predict the future of coral reefs in an era of climate change*, in *Coral bleaching: patterns, processes, causes and consequences*, M.J.H. van Oppen and J.M. Lough, Editors. 2018, Springer International Publishing: Cham. p. 325-341.
7. Frölicher, T.L., E.M. Fischer, and N. Gruber, *Marine heatwaves under global warming*. *Nature*, 2018. **560**(7718): p. 360-364.
8. Eakin, C.M., et al., *Caribbean corals in crisis: record thermal stress, bleaching, and mortality in 2005*. *PLoS ONE*, 2010. **5**(11): p. e13969.
9. Hughes, T.P., et al., *Spatial and temporal patterns of mass bleaching of corals in the Anthropocene*. *Science*, 2018. **359**(6371): p. 80-83.

10. Hughes, T.P., et al., *Global warming and recurrent mass bleaching of corals*. Nature, 2017. **543**(7645): p. 373-377.
11. Hoegh-Guldberg, O., *Climate change, coral bleaching and the future of the world's coral reefs*. Marine and Freshwater Research, 1999. **50**(8): p. 839-866.
12. Blunden, J. and D.S. Arndt, *State of the climate in 2017*. Bulletin of the American Meteorological Society, 2018. **99**(8): p. Si–S332.
13. Blunden, J. and D.S. Arndt, *State of the Climate in 2019*. Bulletin of the American Meteorological Society, 2020. **101**(8): p. S1-S429.
14. Blunden, J. and D.S. Arndt, *State of the Climate in 2018*. Bulletin of the American Meteorological Society, 2019. **100**(9): p. Si-S306.
15. Eakin, C., et al., *Unprecedented three years of global coral bleaching 2014-17*, in *State of the climate in 2017*, J. Blunden and D. Arndt, Editors. 2018. p. S74-S75.
16. Eakin, C.M., et al., *Ding, dong, the witch is dead (?) – three years of global coral bleaching 2014-2017*. Reef Encounter, 2017. **32**(45): p. 33-38.
17. Wilkinson, C.R., *Status of Coral Reefs of the World: 2000*. 2000, Townsville, Australia: Australian Institute of Marine Science. 363.
18. Heron, S.F., et al., *Impacts and effects of ocean warming on coral reefs*, in *Explaining ocean warming: causes, scale, effects and consequences*, D. Laffoley and J.M. Baxter, Editors. 2016, International Union for Conservation of Nature: Gland, Switzerland. p. 177-197.
19. Raymundo, L.J., et al., *Successive bleaching events cause mass coral mortality in Guam, Micronesia*. Coral Reefs, 2019. **38**(4): p. 677-700.
20. Burt, J.A., et al., *Causes and consequences of the 2017 coral bleaching event in the southern Persian/Arabian Gulf*. Coral Reefs, 2019. **38**(4): p. 567-589.
21. GBRMPA, *Reef Health update – 25 March 2022*. 2022, Great Barrier Reef Marine Park Authority: Townsville, QLD, Australia.
22. Eakin, C.M., H.P.A. Sweatman, and R.E. Brainard, *The 2014–2017 global-scale coral bleaching event: insights and impacts*. Coral Reefs, 2019. **38**(4): p. 539-545.
23. Liu, G., et al., *NOAA Coral Reef Watch (CRW) Daily Global 5-km (0.05 degree) Satellite Coral Bleaching Heat Stress Monitoring Product Suite v3.1*. 2018, NOAA National Centers for Environmental Information, <https://doi.org/10.25921/6jgr-pt28>.

24. Skirving, W., et al., *CoralTemp and the Coral Reef Watch Coral Bleaching Heat Stress Product Suite Version 3.1*. Remote Sensing, 2020. **12**(23).
25. Oliver, J.K., R. Berkelmans, and C.M. Eakin, *Coral bleaching in space and time*, in *Coral bleaching: patterns, processes, causes and consequences*, M.J.H. van Oppen and J.M. Lough, Editors. 2018, Springer International Publishing: Cham. p. 27-49.
26. Donner, S.D., G.J.M. Rickbeil, and S.F. Heron, *A new, high-resolution global mass coral bleaching database*. PLoS ONE, 2017. **12**(4): p. e0175490.
27. Smith, K.M., et al., *Impacts of consecutive bleaching events and local algal abundance on transplanted coral colonies in the Florida Keys*. Coral Reefs, 2019. **38**(4): p. 851-861.
28. Brainard, R.E., et al., *Ecological impacts of the 2015/16 El Niño in the central equatorial Pacific*. Bulletin of the American Meteorological Society, 2018. **99**(1): p. S21-S26.
29. Vargas-Ángel, B., et al., *El Niño-associated catastrophic coral mortality at Jarvis Island, central Equatorial Pacific*. Coral Reefs, 2019. **38**(4): p. 731-741.
30. Couch, C.S., et al., *Mass coral bleaching due to unprecedented marine heatwave in Papahānaumokuākea Marine National Monument (Northwestern Hawaiian Islands)*. PLoS ONE, 2017. **12**(9).
31. Maucieri, D.G. and J.K. Baum, *Impacts of heat stress on soft corals, an overlooked and highly vulnerable component of coral reef ecosystems, at a central equatorial Pacific atoll*. Biological Conservation, 2021. **262**: p. 109328.
32. Claar, D., et al., *Dynamic symbioses reveal pathways to coral survival through prolonged heatwaves*. Nature Communications, 2020. **11**: p. 6097.
33. Souter, D., et al., *Status of Coral Reefs of the World: 2020*, in *Status of Coral Reefs of the World*. 2021, Global Coral Reef Monitoring Network: Townsville MD, Queensland, Australia.
34. Skirving, W., et al., *Remote Sensing of Coral Bleaching Using Temperature and Light: Progress towards an Operational Algorithm*. Remote Sensing, 2018. **10**(1): p. 18.
35. MacNeil, M.A., et al., *Water quality mediates resilience on the Great Barrier Reef*. Nature Ecology & Evolution, 2019.
36. Hughes, T.P., et al., *Global warming transforms coral reef assemblages*. Nature, 2018. **556**(7702): p. 492-496.
37. Hughes, T.P., et al., *Ecological memory modifies the cumulative impact of recurrent climate extremes*. Nature Climate Change, 2019. **9**(1): p. 40-43.

38. Evans, R., et al., *Early recovery dynamics of turbid coral reefs after recurring bleaching events*. Journal of Environmental Management, 2020. **268**: p. 110666.
39. Pratchett, M.S., et al., *Changes in Bleaching Susceptibility among Corals Subject to Ocean Warming and Recurrent Bleaching in Moorea, French Polynesia*. PLoS ONE, 2013. **8**(7): p. e70443.
40. Brodnicke, O.B., et al., *Unravelling the links between heat stress, bleaching and disease: fate of tabular corals following a combined disease and bleaching event*. Coral Reefs, 2019. **38**(4): p. 591-603.
41. Muller, E.M., E. Bartels, and I.B. Baums, *Bleaching causes loss of disease resistance within the threatened coral species *Acropora cervicornis**. eLife, 2018. **7**: p. e35066.
42. Gardner, T.A., et al., *Long-term region-wide declines in Caribbean corals*. Science, 2003. **301**: p. 958-960.
43. Wilkinson, C., *Status of Coral Reefs of the World: 2000*. 2000, Townsville: Australian Institute for Marine Science. 363.
44. Coffroth, M., H. Lasker, and J. Oliver, *Coral mortality outside of the eastern Pacific during 1982-83: relationship to El Niño*, in *Global consequences of the 1982-83 El Nino-Southern Oscillation*, P. Glynn, Editor. 1990, Elsevier: Amsterdam. p. 141-177.
45. Kramer, P, L. Roth, and J.C. Lang, *Map of Coral Cover of Susceptible Coral Species to SCTLD*. 2020, Atlantic and Gulf Rapid Reef Assessment, <https://www.agrra.org/coral-disease-outbreak/>.
46. Vega-Rodriguez, M., et al., *Influence of water-temperature variability on stony coral diversity in Florida Keys patch reefs*. Marine Ecology Progress Series, 2015. **528**: p. 173-186.
47. Melo-Merino, S.M., et al., *Functional divergence from ecological baselines on Caribbean coral reefs*. Ecography. **n/a**(n/a): p. e05811.
48. McWilliam, M., et al., *Deficits in functional trait diversity following recovery on coral reefs*. Proceedings of the Royal Society B: Biological Sciences, 2020. **287**(1918): p. 20192628.
49. Teixeira, C.D., et al., *Sustained mass coral bleaching (2016–2017) in Brazilian turbid-zone reefs: taxonomic, cross-shelf and habitat-related trends*. Coral Reefs, 2019. **38**(4): p. 801-813.
50. Duarte, G.A.S., et al., *Heat Waves Are a Major Threat to Turbid Coral Reefs in Brazil*. Frontiers in Marine Science, 2020. **7**(179).
51. Huang, B., et al., *NOAA 0.25-degree Daily Optimum Interpolation Sea Surface Temperature (OISST), Version 2.1*. 2020, NOAA National Centers for Environmental Information, <https://doi.org/10.25921/RE9P-PT57>.

52. Hughes, T.P., et al., *Emergent properties in the responses of tropical corals to recurrent climate extremes*. Current Biology, 2021.
53. Bairos-Novak, K.R., et al., *Coral adaptation to climate change: Meta-analysis reveals high heritability across multiple traits*. Global Change Biology, 2021. **27**(22): p. 5694-5710.
54. Dixon, A.M., et al., *Future loss of local-scale thermal refugia in coral reef ecosystems*. PLOS Climate, 2022. **1**(2): p. e0000004.
55. Woodhead, A., et al., *Coral reef ecosystem services in the Anthropocene*. 2019.
56. IPCC, *Summary for Policymakers, in Climate Change 2022: Impacts, Adaptation and Vulnerability. Contribution of Working Group II to the Sixth Assessment Report of the Intergovernmental Panel on Climate Change*. 2022.
57. López, A.L., M.W. Chwastyk, and K.L. Berne, *The Toll of War*, in *National Geographic Magazine*. 2020. p. 70-75.

Figures

Figure 1

Global pattern of maximum heat stress from 2014-17. Heat stress categories [1] of Alert Levels 1 and 2 correspond to heat stress likely to cause significant coral bleaching ($DHW \geq 4$ °C-weeks) and severe bleaching with significant mortality ($DHW \geq 8$ °C-weeks) respectively, and new Alert Level 3 corresponds to heat stress likely to cause severe, widespread mortality ($DHW \geq 16$ °C-weeks). See Extended Data Fig. 1a for map showing global reef locations.

1. Skirving, W., et al., *CoralTemp and the Coral Reef Watch Coral Bleaching Heat Stress Product Suite Version 3.1*. Remote Sensing, 2020. **12**(23).

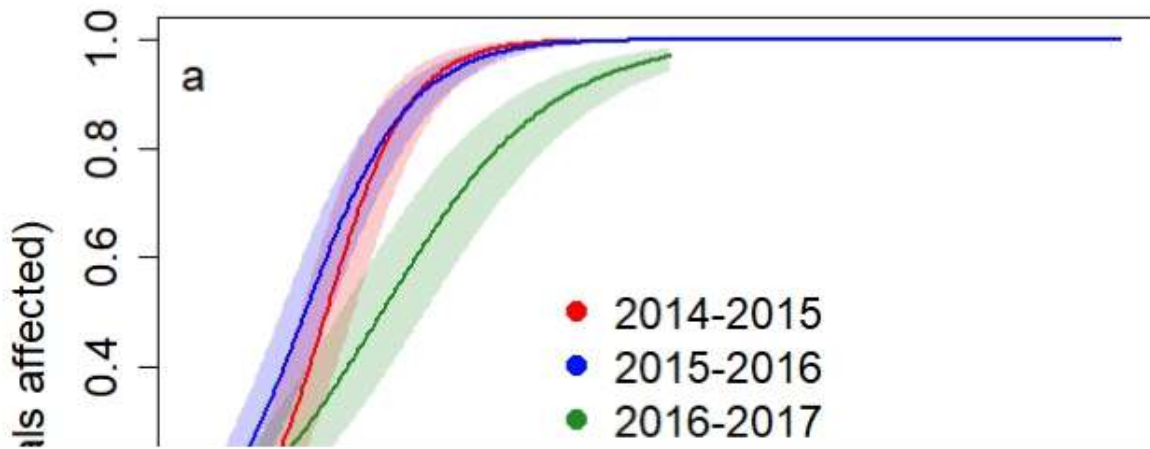


Figure 2

Fitted response curves for observed significant coral bleaching (affecting >10% of corals) as a function of heat stress varied among years and basins. Bleaching response curves, with 95% confidence limits (shading), in each of the: **a** three bleaching years 2014-15, 2015-16, 2016-17 and **b** three regions Asia-Pacific (AP), Caribbean-Atlantic (CA), and Indian Ocean-Middle East (IM)). The vertical axis is the probability of observed significant bleaching estimated from the bleaching database.

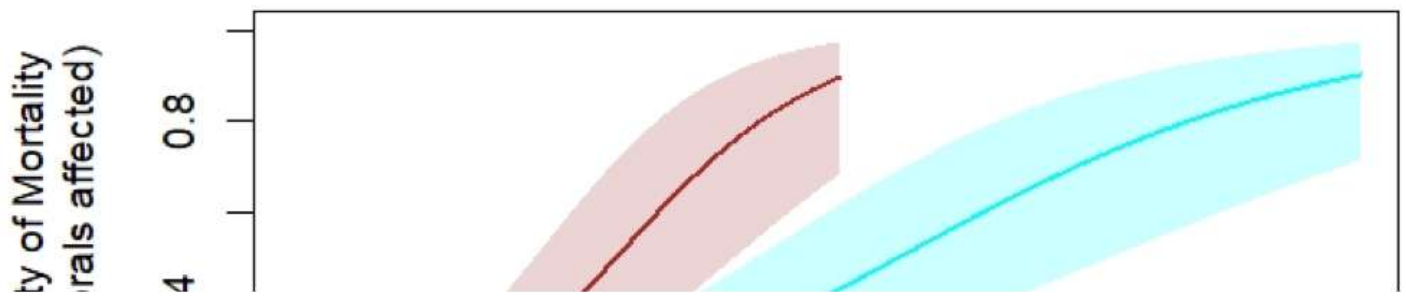


Figure 3

The response curves for observed significant coral mortality (affecting >10% of corals) as a function of heat stress varied among ocean basins across all years. The vertical axis is the probability of significant mortality calculated from the mortality data.

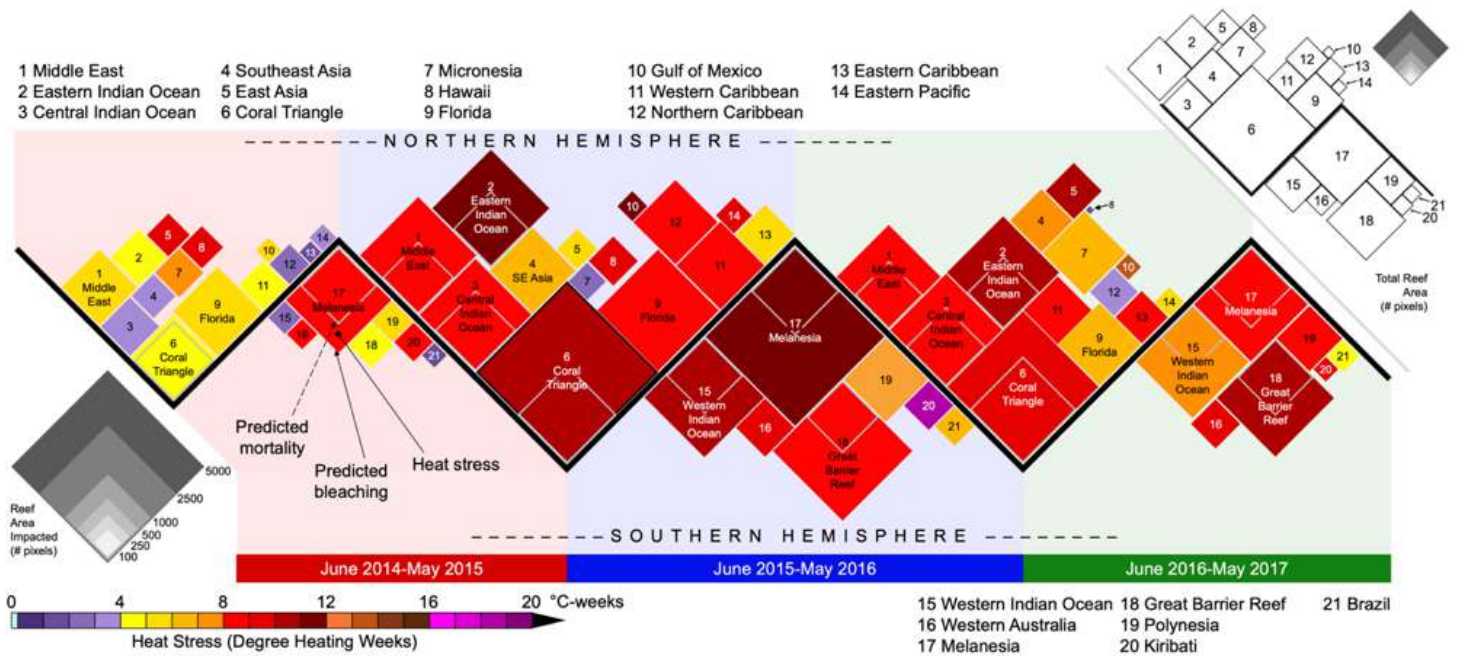


Figure 4

Projected coral bleaching and mortality impacts during GCBE3. Model-calculated area of reef impacted by significant (>10%) coral bleaching (solid diamonds) and mortality (sub-diamonds) for the 21 GCBE3 regions, in units of number of $\sim 5 \times 5 \text{ km}^2$ satellite pixels (scale at left). The Central solid black line denotes Equator through annual cycles. Colors represent the maximum heat stress (DHW data set in units of $^{\circ}\text{C}$ -weeks) in each region in that bleaching year (DHW scale at lower-left); to improve legibility white text used in diamonds for heat stress below 2°C -weeks and above 9°C -weeks; black text used for 2 - 9°C -weeks. The inset (top-right) indicates the total reef area for each GCBE3 region (scale divisions in inset correspond with area scale in lower left of main image). Predicted mortality is shown only where the area exceeded 500 pixels ($\sim 0.1\%$ of reef pixels). Eastern Atlantic region not shown due to small reef area (4 of 53,997 reef-containing pixels). Data in Extended Data Table 3.

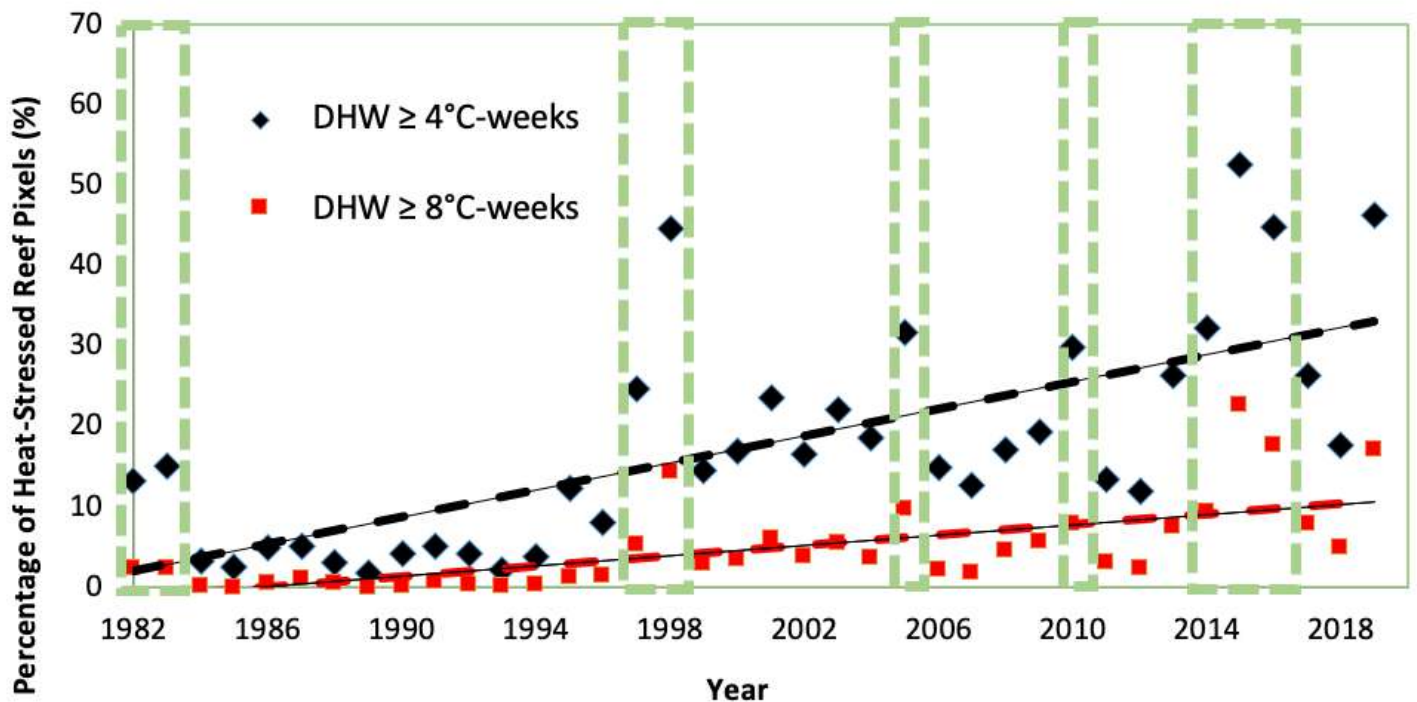


Figure 5

Percentage of global reef pixels reaching $\text{DHW} \geq 4$ and 8°C -weeks calculated from the NOAA Optimum Interpolation Sea Surface Temperature (OISST), Version 2.1 [2]. Years on the x-axis correspond to first year of each bleaching-year couplet (i.e., 2014 = June 2014 - May 2015). Green, dashed boxes correspond to major El Niño-Southern Oscillation events.

2. Banzon, V., et al., *Improved Estimation of Proxy Sea Surface Temperature in the Arctic*. Journal of Atmospheric and Oceanic Technology, 2020. **37**(2): p. 341-349.

Supplementary Files

This is a list of supplementary files associated with this preprint. Click to download.

- [EakinetalGCBEExtendedData2022Apr13.docx](#)
- [ExtendedDataTable22022Apr13.xlsx](#)